

Inspecting **Informing** Improving

Patient survey report 2006



Inpatient survey 2005

Dudley Group Of Hospitals NHS Trust

The survey of adult inpatients 2005 was designed, developed and coordinated by the NHS Surveys Advice Centre at Picker Institute Europe



making patients' views count

The Healthcare Commission

The Healthcare Commission exists to promote improvements in the quality of healthcare and public health in England. We are committed to making a real difference to the delivery of healthcare and to promoting continuous improvement for the benefit of patients and the public. The Healthcare Commission's full name is the Commission for Healthcare Audit and Inspection.

The Healthcare Commission was created under the Health and Social Care (Community Health and Standards) Act 2003. The organisation has a range of new functions and took over some responsibilities from other Commissions.

We have a statutory duty to assess the performance of healthcare organisations in the NHS and award annual ratings of performance, to coordinate inspections and reviews of healthcare organisations carried out by others, and register organisations providing healthcare in the independent sector on an annual basis.

We have created an entirely new approach to assessing and reporting on the performance of healthcare organisations - our annual health check - which will examine a much broader range of factors enabling us to focus on what really matters to patients and the public.

Introduction

Understanding what patients think about the care and treatment they receive is crucial to improving the quality of care being delivered by the NHS and to ensuring that local health services meet the needs of patients and the public. One way of doing this is by asking patients who have recently used their local health services to tell us about their experiences.

In 2004, the Healthcare Commission carried out seven national surveys of patients covering topics as diverse as hospital inpatient care for adults, services for children and young people, ambulance services and outpatient services.

In 2005, we revisited three areas already covered by the survey programme - mental health, primary care and adult inpatient services - again asking patients to give us their views about the care and treatment they have received.

The first adult inpatient survey was carried out in 2002 and repeated in 2004. In 2005, the third adult inpatient survey involved 169 acute and specialist NHS trusts that care for adult inpatients, and responses were received from 82,994 patients.

This report compares the results for the inpatient survey in this trust with results for other trusts. 165 of the 169 trusts involved in the 2005 inpatient survey are included in the comparison. Four trusts are excluded from this comparison because their survey excluded patients who stayed for fewer than two nights or because some of the age and sex data were corrupted and, as a result, could not be standardised¹.

Interpreting the report

For each question in the survey, the individual responses were scored on a scale of 0 to 100. A score of 100 represents the best possible response¹.

Each bar represents the range of results for each question across the 165 trusts that took part in the survey and have collected comparable information.

The bar is divided into three coloured segments:

- the left hand end (coloured red) shows the scores for the 20% of trusts with the lowest scores
- the right hand end (coloured green) shows the scores for the 20% of trusts with the highest scores
- the middle section (coloured orange) represents the range of scores for the remaining 60% of trusts

The score for this trust is shown on each bar by a white diamond. So, for example, if the diamond is in the green section of the bar, the trust is in the best 20% of trusts in England.

The line either side of the diamond shows the amount of uncertainty surrounding the trust value, as a result of random fluctuation².

¹ The results have been weighted by the age and sex of respondents. The trust-level results are standardised, so that their age-sex profile reflects the national age-sex distribution (based on all of the survey respondents). This is so that results can be compared between trusts with different patient profiles.

² This is the 95% confidence interval indicating that in 95% of cases we can expect the true value to be within this range. Where fewer than 30 people answered a question at this trust the diamond is not shown because the uncertainty around the result would be too great. Note also that when identifying trusts with the highest and lowest scores and thresholds, trusts with fewer than 30 respondents have not been included.

The data used for the charts is shown in table 1. Table 2 gives background information about the patients that we surveyed.

Further information

Full details of the survey methodology can be found at:

http://www.nhssurveys.org/docs/Inpatient_Surveys_Guidance_2005_V8_3.pdf

More information on the programme of surveys of NHS patients is available on the NHS Surveys Advice Centre website:

<http://www.nhssurveys.org/>

The results of the 2005 survey of adult inpatients, the questionnaire and scoring can be found at:

<http://www.healthcarecommission.org.uk/PatientSurveyInpatient2005>

The results of the 2002 survey of adult inpatients can be found at the Department of Health website:

<http://www.dh.gov.uk/PublicationsAndStatistics/PublishedSurvey/NationalSurveyOfNHSPatients/fs/en>

The results of the 2004 survey of adult inpatients results can be found at:

<http://www.healthcarecommission.org.uk/PatientSurveyInpatient2004>

More information on the 2005/2006 rating of NHS performance is available on the Healthcare Commission website

www.healthcarecommission.org.uk/ratings

Inpatient survey 2005

Dudley Group Of Hospitals NHS Trust

Admission to hospital

Were the ambulance crew reassuring?

Did the ambulance crew explain your care and treatment in a way you could understand?

Did the ambulance crew do everything they could to help control your pain?

Overall, did the ambulance crew treat you with respect and dignity?

Did you think the order patients were seen in the Emergency Department was fair?

How much information about your condition did you get in the Emergency Department?

Were you given enough privacy when being examined in the Emergency Department?

How long did you wait before being admitted to a bed on a ward?

Were you given a choice of admission dates?

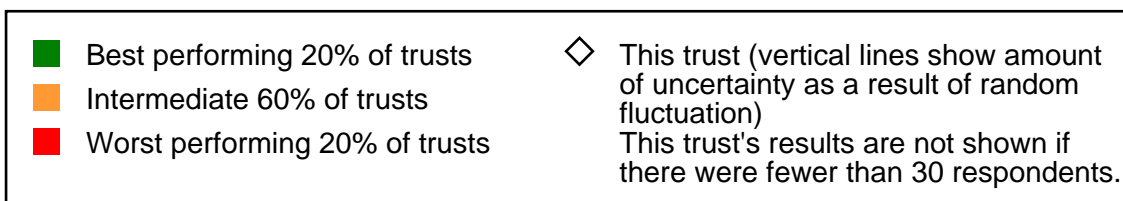
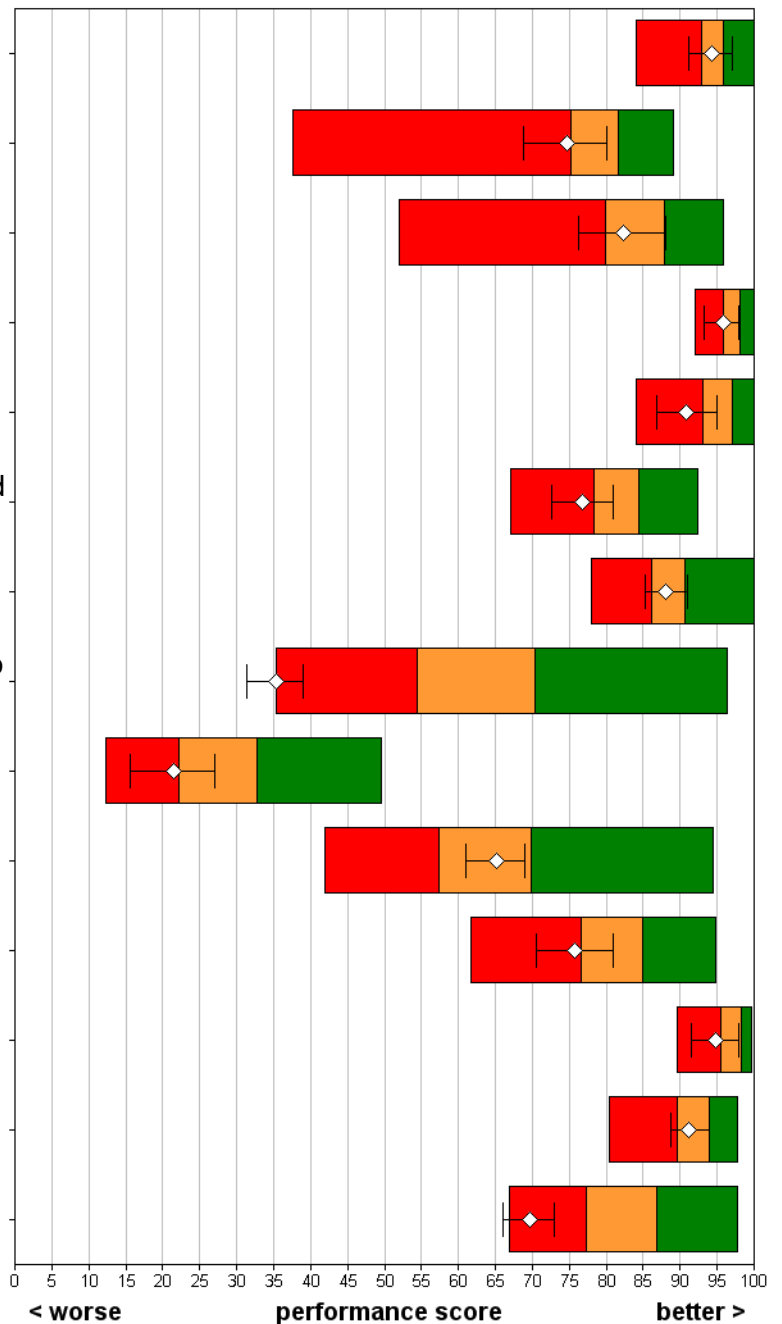
Overall, how long did you wait to be admitted to hospital?

How do you feel about the length of time you were on the waiting list?

Were you given enough notice of the date of your admission?

Was your admission date changed by the hospital?

Did you feel that you had to wait a long time to get to a bed on a ward?



Inpatient survey 2005

Dudley Group Of Hospitals NHS Trust

The hospital and ward

Did you ever share a room or bay with patients of the opposite sex?

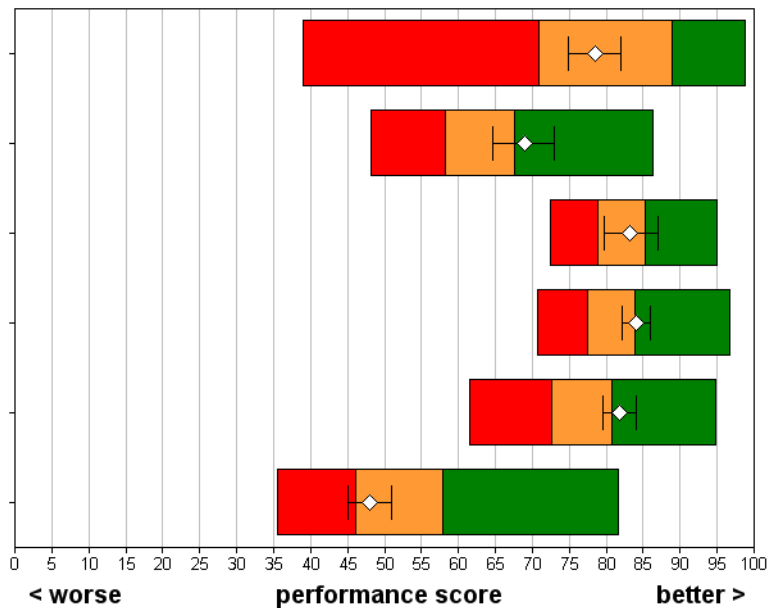
Were you ever bothered by noise at night from other patients?

Were you ever bothered by noise at night from hospital staff?

In your opinion, how clean was the hospital room or ward that you were in?

How clean were the toilets and bathrooms that you used in hospital?

How would you rate the hospital food?



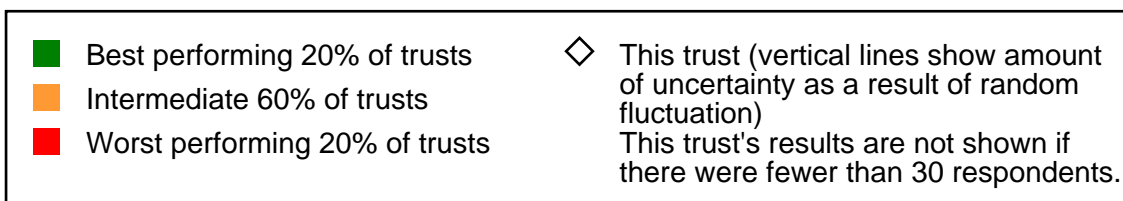
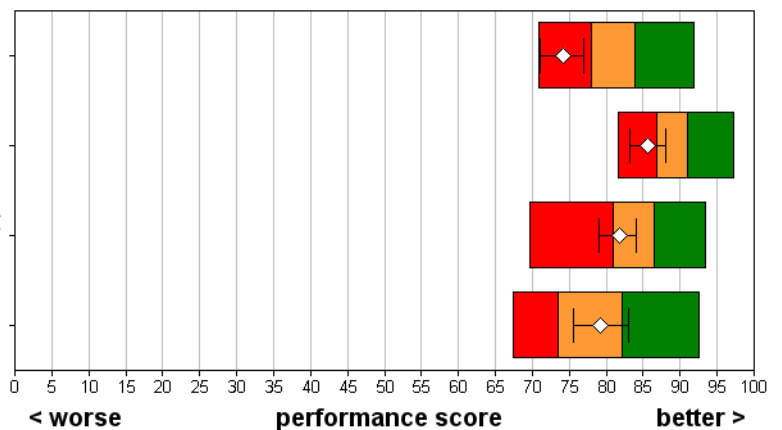
Doctors

When you had questions to ask a doctor, did you get answers you could understand?

Did you have confidence and trust in the doctors treating you?

Did doctors talk in front of you as if you weren't there?

As far as you know, did doctors wash or clean their hands between touching patients?



Inpatient survey 2005

Dudley Group Of Hospitals NHS Trust

Nurses

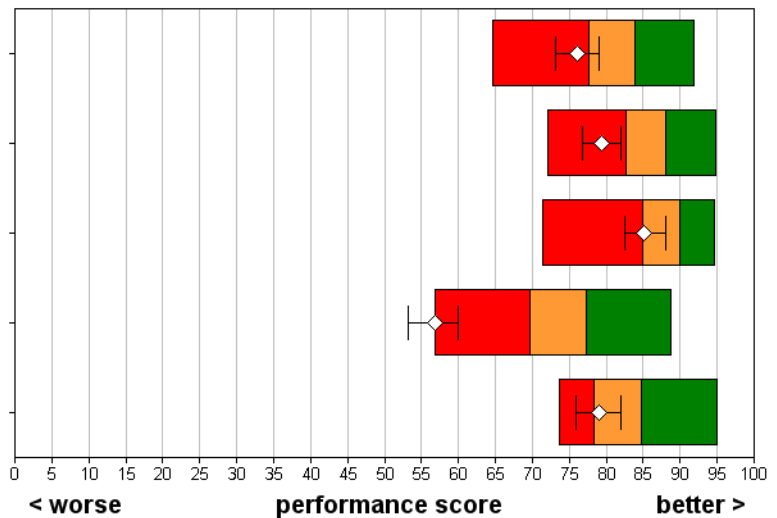
When you had questions to ask a nurse, did you get answers you could understand?

Did you have confidence and trust in the nurses treating you?

Did nurses talk in front of you as if you weren't there?

In your opinion, were there enough nurses on duty to care for you in hospital?

As far as you know, did nurses wash or clean their hands between touching patients?



Your care and treatment

Did a member of staff say one thing and another say something different?

Were you involved as much as you wanted to be in decisions about your care?

How much information about your condition or treatment was given to you?

Did your family or someone close to you have enough opportunity to talk to a doctor?

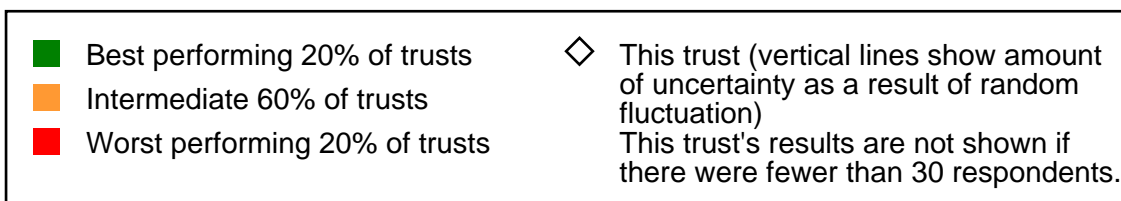
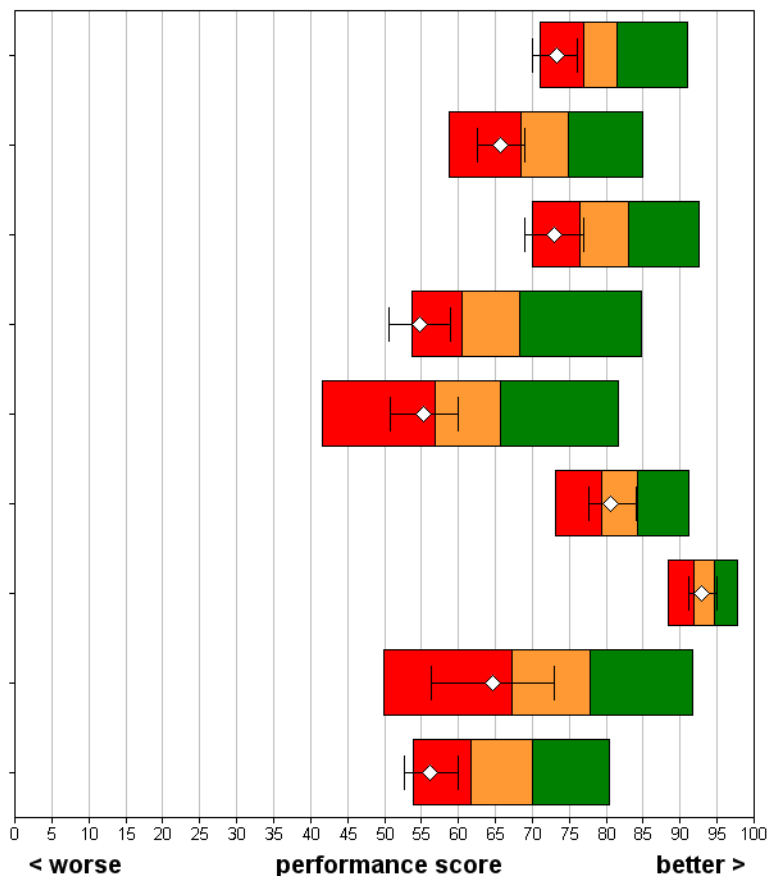
Did you find someone on the hospital staff to talk to about your worries and fears?

Were you given enough privacy when discussing your condition or treatment?

Were you given enough privacy when being examined or treated?

Did you get help from staff to eat your meals?

After you used the call button, how long did it usually take before you got help?

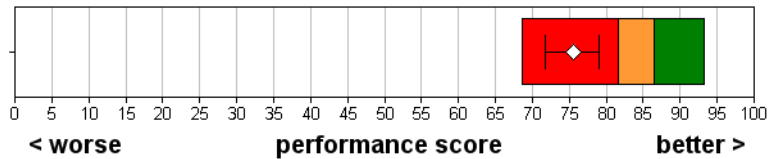


Inpatient survey 2005

Dudley Group Of Hospitals NHS Trust

Pain

Did you think the hospital staff did everything they could to help control your pain?



Operations and procedures

Did a member of staff explain the risks and benefits of the operation or procedure?

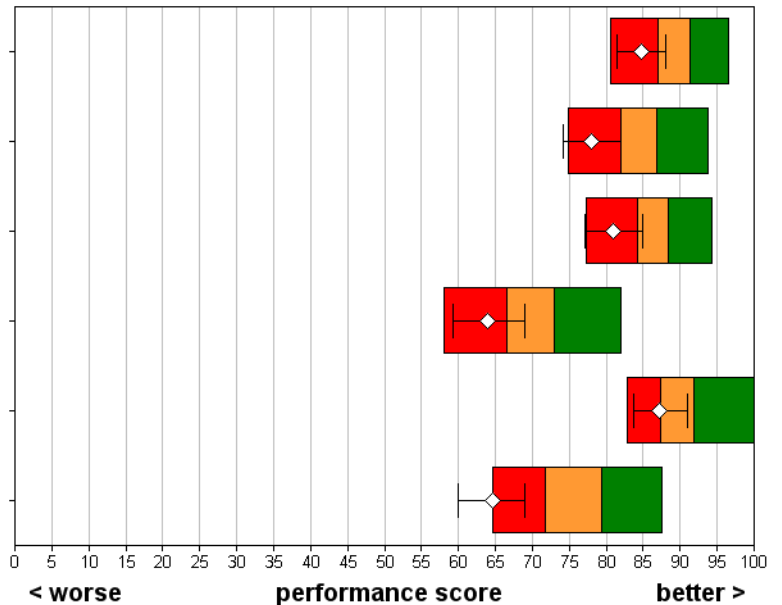
Did a member of staff explain what would be done during the operation or procedure?

Did a member of staff answer your questions about the operation or procedure?

Were you told how you could expect to feel after you had the operation or procedure?

Did the anaesthetist explain how he or she would put you to sleep or control your pain?

Afterwards, did a member of staff explain how the operation or procedure had gone?



■ Best performing 20% of trusts	■ Intermediate 60% of trusts	■ Worst performing 20% of trusts	◇ This trust (vertical lines show amount of uncertainty as a result of random fluctuation)
			This trust's results are not shown if there were fewer than 30 respondents.

Inpatient survey 2005

Dudley Group Of Hospitals NHS Trust

Leaving hospital

How long was the delay to discharge?

Did hospital staff explain the purpose of the medicines you were to take home?

Did a member of staff tell you about medication side effects to watch for?

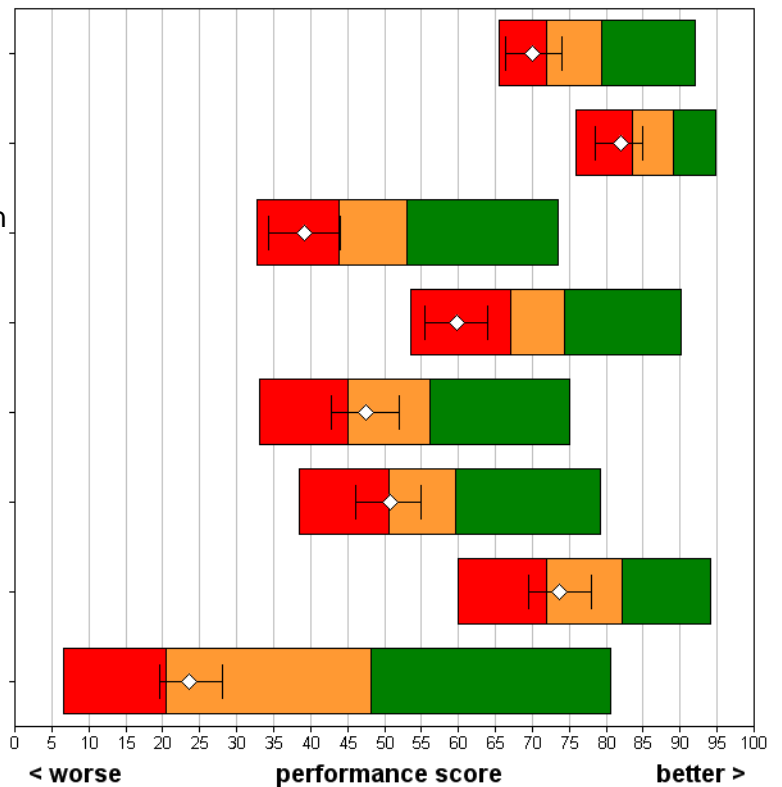
Were you given clear written information about your medicines?

Did a member of staff tell you about any danger signals you should watch for?

Did hospital staff give your family or someone close to you all the information they needed?

Did hospital staff tell you who to contact if you were worried about your condition?

Did you receive copies of letters sent between hospital doctors and your family doctor?



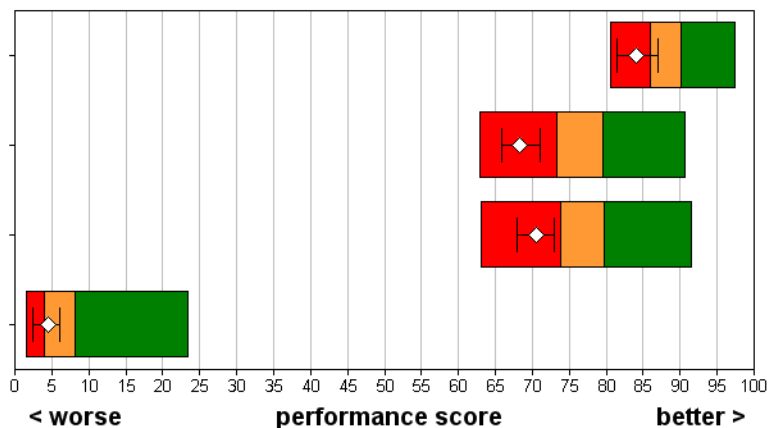
Overall

Did you feel you were treated with respect and dignity while you were in the hospital?

How would you rate how well the doctors and nurses worked together?

Overall, how would you rate the care you received?

While in hospital, were you ever asked to give your views on the quality of your care?



■ Best performing 20% of trusts	■ Intermediate 60% of trusts	■ Worst performing 20% of trusts	◇ This trust (vertical lines show amount of uncertainty as a result of random fluctuation)
			This trust's results are not shown if there were fewer than 30 respondents.

Inpatient survey 2005

Dudley Group Of Hospitals NHS Trust

	Scores for this NHS trust	95% Confidence Intervals		Highest score achieved (all trusts)		Number of respondents (this trust)	
		Lower	Upper	Threshold score for the best 20% of NHS trusts			
Admission to hospital							
Q3	Were the ambulance crew reassuring?	94	91	97	96	100	146
Q4	Did the ambulance crew explain your care and treatment in a way you could understand?	75	69	80	82	89	136
Q5	Did the ambulance crew do everything they could to help control your pain?	82	76	88	88	96	121
Q6	Overall, did the ambulance crew treat you with respect and dignity?	96	93	98	98	100	146
Q8	Did you think the order patients were seen in the Emergency Department was fair?	91	87	95	97	100	194
Q9	How much information about your condition did you get in the Emergency Department?	77	73	81	84	92	249
Q10	Were you given enough privacy when being examined in the Emergency Department?	88	85	91	91	100	254
Q11	How long did you wait before being admitted to a bed on a ward?	35	31	39	70	96	237
Q12	Were you given a choice of admission dates?	21	16	27	33	50	197
Q13	Overall, how long did you wait to be admitted to hospital?	65	61	69	70	94	193
Q14	How do you feel about the length of time you were on the waiting list?	76	71	81	85	95	196
Q15	Were you given enough notice of the date of your admission?	95	92	98	98	100	198
Q16	Was your admission date changed by the hospital?	91	89	94	94	98	200
Q17	Did you feel that you had to wait a long time to get to a bed on a ward?	70	66	73	87	98	472
The hospital and ward							
Q18	Did you ever share a room or bay with patients of the opposite sex?	78	75	82	89	99	476
Q19	Were you ever bothered by noise at night from other patients?	69	65	73	68	86	474
Q20	Were you ever bothered by noise at night from hospital staff?	83	80	87	85	95	480
Q21	In your opinion, how clean was the hospital room or ward that you were in?	84	82	86	84	97	482
Q22	How clean were the toilets and bathrooms that you used in hospital?	82	80	84	81	95	477
Q23	How would you rate the hospital food?	48	45	51	58	82	454

Inpatient survey 2005

Dudley Group Of Hospitals NHS Trust

	Scores for this NHS trust	95% Confidence Intervals		Threshold score for the best 20% of NHS trusts	Highest score achieved (all trusts)	Number of respondents (this trust)
		Lower	Upper			
Doctors						
Q24 When you had questions to ask a doctor, did you get answers you could understand?	74	71	77	84	92	423
Q25 Did you have confidence and trust in the doctors treating you?	86	83	88	91	97	477
Q26 Did doctors talk in front of you as if you weren't there?	82	79	84	86	93	476
Q27 As far as you know, did doctors wash or clean their hands between touching patients?	79	76	83	82	93	294
Nurses						
Q28 When you had questions to ask a nurse, did you get answers you could understand?	76	73	79	84	92	425
Q29 Did you have confidence and trust in the nurses treating you?	79	77	82	88	95	482
Q30 Did nurses talk in front of you as if you weren't there?	85	83	88	90	95	481
Q31 In your opinion, were there enough nurses on duty to care for you in hospital?	57	53	60	77	89	480
Q32 As far as you know, did nurses wash or clean their hands between touching patients?	79	76	82	85	95	384
Your care and treatment						
Q33 Did a member of staff say one thing and another say something different?	73	70	76	81	91	481
Q34 Were you involved as much as you wanted to be in decisions about your care?	66	63	69	75	85	475
Q35 How much information about your condition or treatment was given to you?	73	69	77	83	92	478
Q36 Did your family or someone close to you have enough opportunity to talk to a doctor?	55	51	59	68	85	344
Q37 Did you find someone on the hospital staff to talk to about your worries and fears?	55	51	60	66	82	303
Q38 Were you given enough privacy when discussing your condition or treatment?	81	78	84	84	91	471
Q39 Were you given enough privacy when being examined or treated?	93	91	95	95	98	477
Q40 Did you get help from staff to eat your meals?	65	56	73	78	92	101
Q41 After you used the call button, how long did it usually take before you got help?	56	53	60	70	80	251
Pain						
Q43 Did you think the hospital staff did everything they could to help control your pain?	76	72	79	87	93	310

Inpatient survey 2005

Dudley Group Of Hospitals NHS Trust

	Scores for this NHS trust	95% Confidence Intervals		Threshold score for the best 20% of NHS trusts	Highest score achieved (all trusts)	Number of respondents (this trust)
		Lower	Upper			
Operations and procedures						
Q45 Did a member of staff explain the risks and benefits of the operation or procedure?	85	81	88	91	96	274
Q46 Did a member of staff explain what would be done during the operation or procedure?	78	74	82	87	94	279
Q47 Did a member of staff answer your questions about the operation or procedure?	81	77	85	88	94	233
Q48 Were you told how you could expect to feel after you had the operation or procedure?	64	59	69	73	82	278
Q50 Did the anaesthetist explain how he or she would put you to sleep or control your pain?	87	84	91	92	100	242
Q51 Afterwards, did a member of staff explain how the operation or procedure had gone?	65	60	69	79	88	277
Leaving hospital						
Q54 How long was the delay to discharge?	70	66	74	79	92	456
Q55 Did hospital staff explain the purpose of the medicines you were to take home?	82	79	85	89	95	348
Q56 Did a member of staff tell you about medication side effects to watch for?	39	34	44	53	74	291
Q57 Were you given clear written information about your medicines?	60	55	64	74	90	373
Q58 Did a member of staff tell you about any danger signals you should watch for?	48	43	52	56	75	355
Q59 Did hospital staff give your family or someone close to you all the information they needed?	51	46	55	60	79	341
Q60 Did hospital staff tell you who to contact if you were worried about your condition?	74	69	78	82	94	424
Q61 Did you receive copies of letters sent between hospital doctors and your family doctor?	24	20	28	48	81	436
Overall						
Q62 Did you feel you were treated with respect and dignity while you were in the hospital?	84	81	87	90	97	473
Q63 How would you rate how well the doctors and nurses worked together?	68	66	71	80	91	469
Q64 Overall, how would you rate the care you received?	70	68	73	80	92	476
Q65 While in hospital, were you ever asked to give your views on the quality of your care?	4	3	6	8	23	453

Inpatient survey 2005

Dudley Group Of Hospitals NHS Trust

Background information

The sample	This trust	All trusts
Number of respondents	496	80793
Response rate (percentage)	59	59
Demographic characteristics	This trust	All trusts
Gender (percentage)	(%)	(%)
Male	47	46
Female	53	54
Age group (percentage)	(%)	(%)
Aged 35 and younger	13	10
Aged 36 - 50	14	16
Aged 51 - 65	26	26
Aged 66 and older	47	47
Ethnic group (percentage)	(%)	(%)
White	96	91
Mixed	1	1
Asian or Asian British	2	3
Black or Black British	1	2
Chinese or other ethnic group	0	0
Not known	1	4